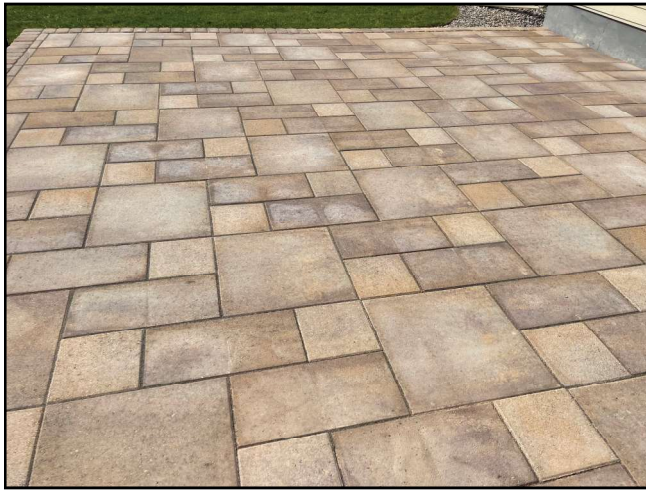


Rectangles

Our most popular rectangle is the 12" x 24". All of our patio stones are 2 1/8" thick, so these rectangles can be used by themselves or they can be mixed in a pattern with any or all of the 12", 18" & 24" square block sizes to create a beautiful patio. As with all patio stones, these are not rated for vehicle traffic, only pedestrian.

Colors: Gray, Red, Tan, Black, #7* & #5*



We have two other options of rectangle patio stones. One is an 2 1/8" 8" x 16" with an imprint of a basket weave brick pattern on the surface. The other is an economical 1 5/8" x 7 5/8" x 15 5/8" smooth slab. Please ask about these stones and the colors they are available in if you are interested.

****Install patio stones using a compacted base, then add an inch of level, compacted concrete sand on top. Place the patio stones and check each unit for level. Sweep concrete sand over the finished patio, ensuring to fill the space between the stones.****

Squares



Square patio stones are very popular for backyard patios, walkways, paths, etc. They are not recommended for driveways or heavy wheel traffic. We manufacture numerous sizes and colors of square patio stones. The ones pictured above have a smooth surface with a beveled edge around the outside. Many patios are installed using the same size patio stone. An installer can, however, use several sizes of squares and rectangles together in a pattern. Please see the inside of this brochure and check out the options we have in 12" and 18" square patio stones with choices of imprints on the top of the stone.

Available Sizes in Smooth Top:
12", 16", 18", & 24" (all are 2 1/8" thick)

Available Colors in Smooth Top:
12", 16", 18", 24"- Gray, Red, Tan, Black
(18" also has- Red/Black, Tan/Brown)
(12" & 24" also has #7* & #5*)

St. Vrain
BLOCK
COMPANY

Patio
Stones



St. Vrain Block Company
a family owned and operated
manufacturer of high-quality
concrete products since 1946.

Ph: 303-833-4144 Fax: 303-833-4145
5150 Grand View Blvd. Dacono, CO 80514
www.stvrainblock.com



For more product photos, guides
& ideas visit our Pinterest page at:
www.pinterest.com/stvrain

Slate Top

Our 12" square Slate Top patio stone has subtle ripple texture on the top of the stone resembling natural cut stone.

Colors: Buff, Buff/Black, Charcoal & Flagstone



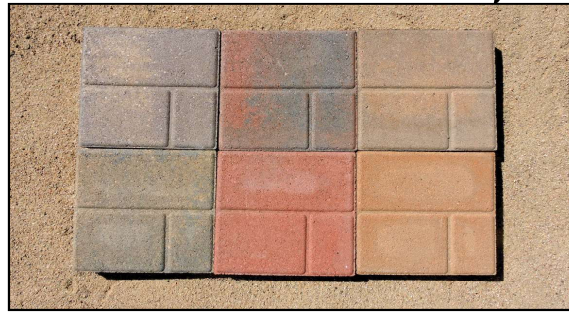
Cobblestone

Our 18" square Cobblestone has opportunity for various installation patterns. The design on the top mimics a circular cobblestone pattern outlined by a running bond pattern. The pattern can be used to create large circles or fans or even a serpentine. With a little creativity, more patterns can be achieved.



Colors:
(top left to bottom right)
Tan, Red, Gray, Tan/Brown, Brown, Red/Black, #5 Gray/ Buff/Black

Paver Top

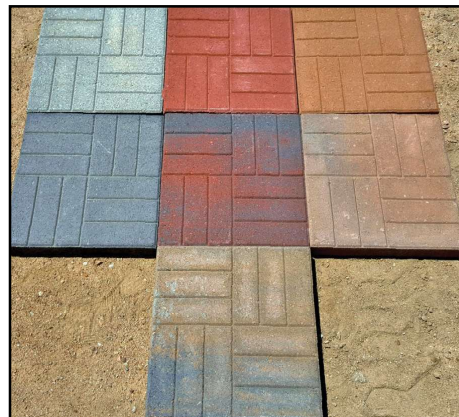


Pavers are widely popular, however, installing them can be a chore. Our 12" square Paver Top offers the appearance of multiple-sized pavers with the ease of installation of a patio stone.

Colors: Red, Tan, Red/Black, Tan/Brown, #5 Gray/ Buff/Black, #7 Gray/ Buff/Purple

Brick Pattern

Our Brick Pattern is 2^{1/8}" thick and 18" square. It is bigger and more stout than other brick patterns on the market. Our Brick Pattern covers more square feet per stone and also allows for the impression of 12 bricks in a basket weave pattern rather than eight.



Colors:
(from top left to bottom right)
Gray, Red, Tan, Black, Red/Black, Tan/Brown, #5 Gray/ Buff/Black

Hexagons

Hexagons resurging in popularity. What's old is new again. A versatile patio stone that creates stylish patios, walkways & paths. Their shape builds a very stable patio due to the way they interlock and have to be placed off bond.

We offer two sizes of hexagons; a 14" and an 18" both are point to point measurements.

From flat to flat, each hexagon measures 2" smaller, (12" and 16"). All Hexagons are 2^{1/8}" thick and come in the following colors.



Colors:
Gray, Red, Tan and Black.

Rounds

Rounds make great stepping stone paths. They can be used underneath outdoor planters or to dress up and stabilize other outdoor ornamentation.

Sizes: 12", 16", 18", and a 24" all 2^{1/8}" thick

Colors: Gray, Red, Tan, and Black.

