

# Holland Pavers



No other paver can duplicate the classic appearance and style of the Holland Paver. Our Hollands are 2 3/8" tall x 4" wide x 8" long. This paver has a smooth top with a defined bevel along the top outside edge. Running Bond, Herringbone and Basket Weave are popular installation patterns

# Colors



Red



Tan



Red/Black



Tan/Brown



Gray/Buff/Black



Charcoal



Gray/Buff/Wine



Red/Buff/Brown

\*Red and Tan available in Holland's and IPB's

# Serpentine Pavers



Manufactured 3 1/8" tall, this paver is both attractive and durable. Pavers out perform poured concrete and asphalt in many ways. Pavers move rather than crack like poured concrete and they are more resistant to "ruts" as develop in asphalt.

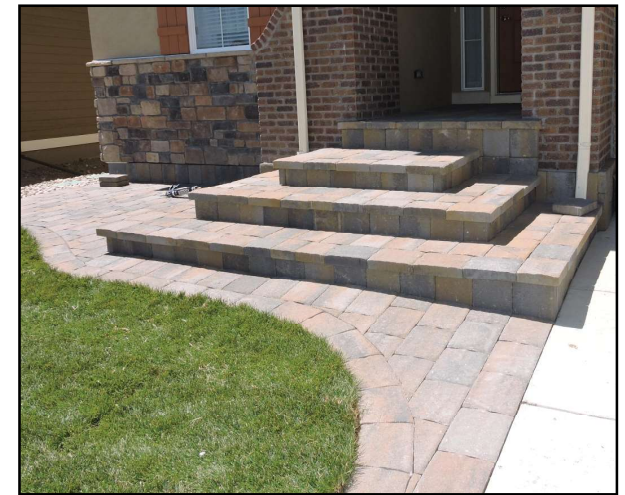
\*\*\*The ICPI specifies using Concrete Sand for both bedding sand & sand applied to the top of the installed pavers & swept into gaps between pavers to lock them together.

# Installation

For detailed instruction on how to install pavers or patio stones, check out [www.icpi.org](http://www.icpi.org). The Interlocking Concrete Pavement Institute, ICPI is the authority on pavers, their use and installation. Their website will provide a wealth of information about the benefits of interlocking concrete pavements.

St. Vrain  
**BLOCK**  
Since 1946  
COMPANY

# Paving Stones



St. Vrain Block Company  
a family owned and operated  
manufacturer of high-quality  
concrete products since 1946

Ph: 303-833-4144 Fax: 303-833-4145  
5150 Grand View Blvd. Dacono, CO 80514  
[www.stvrainblock.com](http://www.stvrainblock.com)

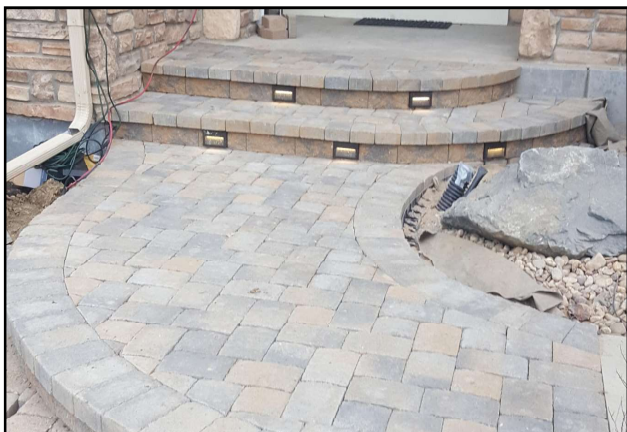


For more product photos, guides,  
& ideas visit our Pinterest page at:  
[www.pinterest.com/stvrainb](http://www.pinterest.com/stvrainb)



# Dublin Pavers

## The 5 Part Paver System



\*8.25" x 16.5" Jumbo Rectangle\*  
1.06 units/sq ft ~ 105 units/pallet



\*11" x 11" Giant Square\*  
1.19 units/sq ft ~ 120 units/pallet



8.25" x 11" Giant Rectangle  
1.59 units/sq ft ~ 160 units/pallet



8.25" x 5.5" Rectangle  
3.17 units/sq ft ~ 320 units/pallet



5.5" 5.5" Square  
4.76 units/sq ft ~ 480 units/pallet



### Colors:

Red/Black,  
Tan/Brown,  
Charcoal,

#5 Gray/Buf/Black,

#4 Rust (Red/Brown/Buf),

#7 Mountain Blend (Gray/  
Buf/Purple)

The Dublin Paver System is made up of five stones, each are 2<sup>3/8</sup>" tall but are different lengths & widths. The shapes & sizes are profiled above. Six different colors are available. Our retaining wall and Quarry Stone lines each have colors that compliment the pavers nicely. Patterns are not mandatory with this paver. Some installers randomly place the different-sized pavers following no pattern at all. We have different pattern design suggestions using the different sizes together. Each pallet of Dublin Pavers has roughly 100 square feet of coverage. Quality is paramount at St. Vrain. Our pavers exceed specifications outlined in ASTM C 936. They will provide a lasting beauty to any patio or driveway.

Pavers are different from patio stones in that they are 2<sup>3/8</sup>" (60mm) or 3<sup>1/8</sup>" (80mm) tall whereas patio stones are 2" tall or less. Pavers also interlock with one another by way of a vertical protrusion on the sides of the block that allow bedding sand to fill the space between the pavers and lock them together. Pavers are manufactured to withstand vehicle traffic whereas patio stones are intended for foot traffic only. ***\*The two largest sizes are not recommended for driveways as they exceed the ASTM size requirement.\****

Unlike poured concrete, a paver patio or driveway can be easily repaired by removing damaged pavers & replacing them with new ones. Do-it-yourselfers can roll up their sleeves & tackle the installation project themselves, whereas poured concrete or asphalt require heavy equipment & professionals. The durability of pavers is superior to other pavements because of their ability to heave rather than crack.